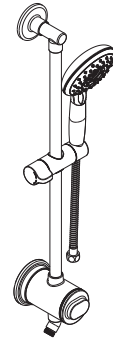




9238759.XXX
(24" Bar 1.8 gpm)



*Thank you for selecting American Standard...
the benchmark of fine quality for over 140 years.*

RECOMMENDED TOOLS AND MATERIALS



Tape Measure



Phillips Head Screwdriver



Level



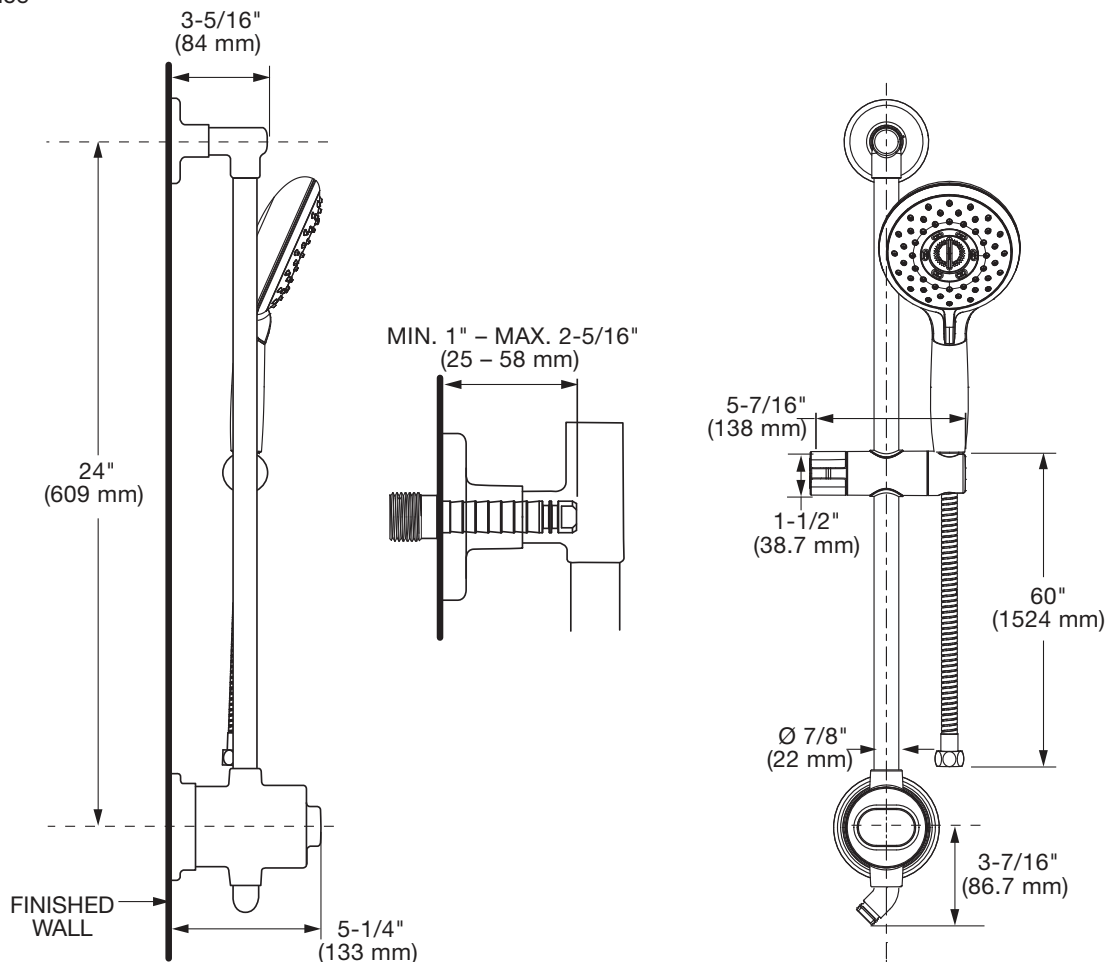
Drill



Plumbers Tape

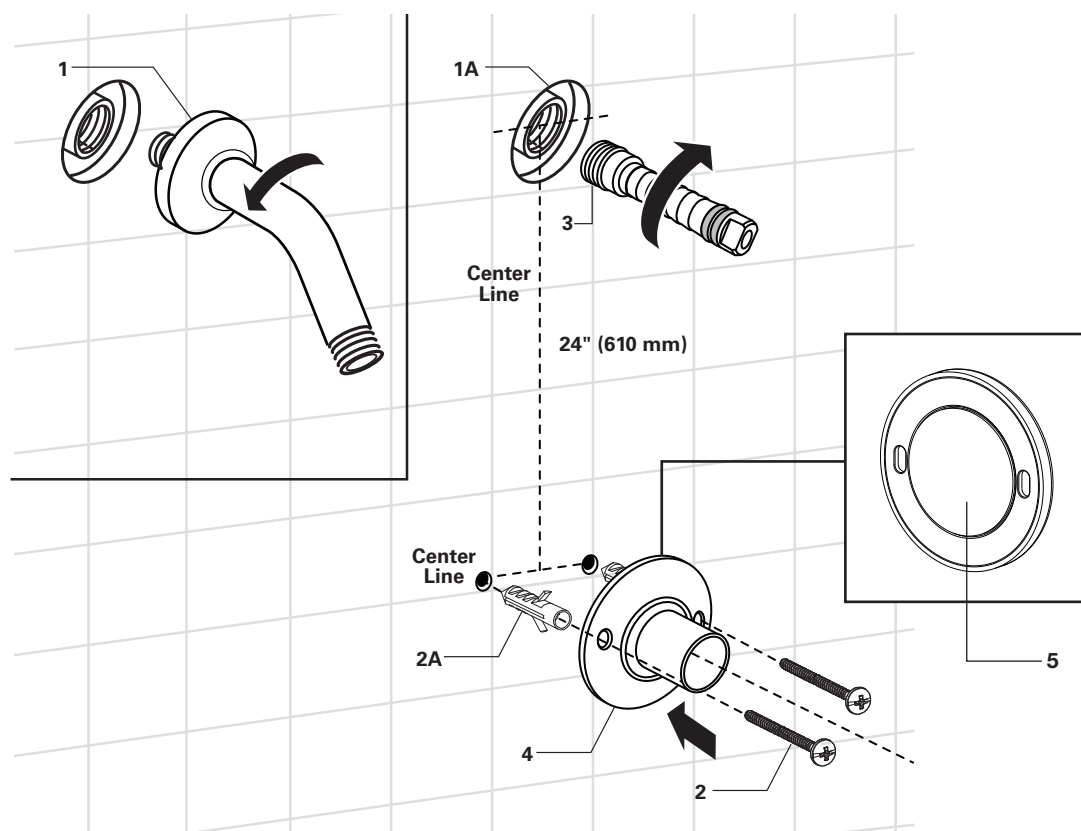
Do Not: Clean the product with soaps, acid, polish, abrasives, harsh cleaners, or a cloth with a coarse surface.

- For reference



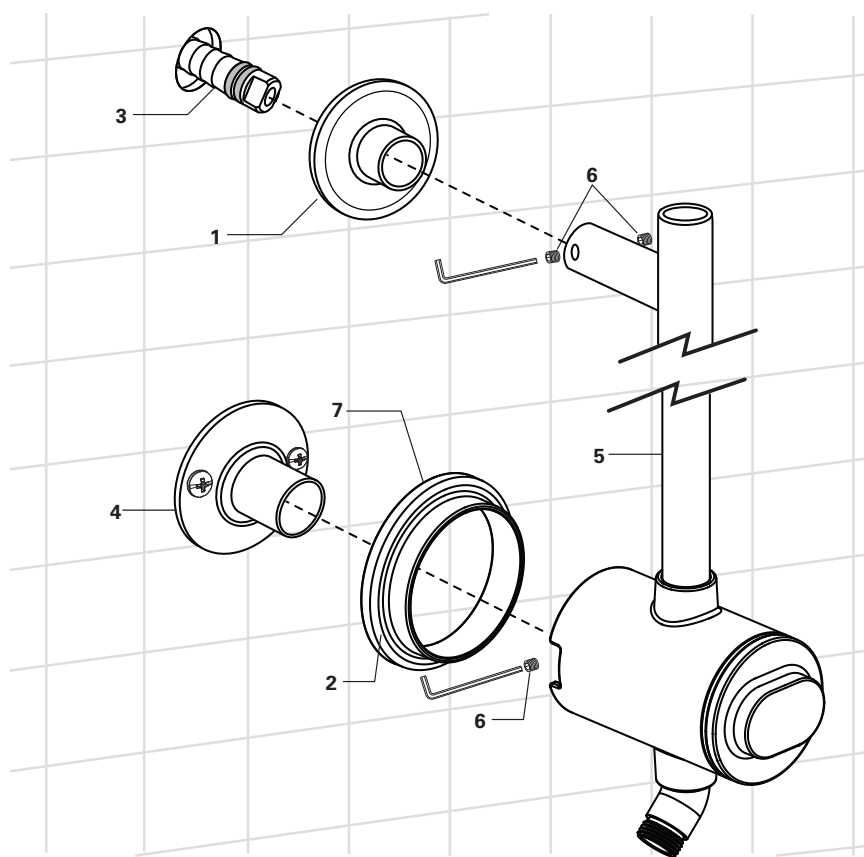
1 INSTALL WALL ADAPTERS

- Remove Old Shower Arm (1).
- **STEP 1a** Install adapter (3) by screwing it onto the pipe. Use teflon tape on the threads to ensure a water tight connection is made. Adapter (3) must protrude from the wall a minimum distance of 1" (25 mm) and a maximum distance of 2-5/16" (58 mm).
- Mark the bottom center line. Use a level to help mark the vertical center line for the mounting location. The distance between the two mounting holes is 24" (610mm).
Optional: The shower bar itself may be used as a template in place of measuring. Slide the shower bar onto Adapter (3), attach Adapter (4) to the shower bar, and mark the location of the two mounting holes from Adapter (4) on the wall.
- The adjustable shower bar works best if secured to a wall stud or cross brace within the wall using screws supplied.
Note: The 24" dimension is important and must be maintained. If Bottom Adapter (4) is secured to a stud or cross brace with in the wall, drill small pilot holes for SCREWS (2).
- For installations on drywall or tiled walls: Use ANCHORS (2A) and SCREWS (2) for securing ESCUTCHEON to finished wall. Drill two 1/4" (6 mm) dia. holes a minimum of 1-3/4" (44 mm) deep. Insert the two ANCHORS (2A) flush with face of the finished wall.
Optional: Bottom Adapter may also be installed using DOUBLE SIDED TAPE (5) (already installed on the back surface). For proper installation wipe clean the surface. Peel off the backing and place it at a desired location. Apply pressure and hold it for 30 seconds before releasing it. **Note:** This installation requires 24 hours of dry surface to adhere properly.



2 INSTALL SHOWER BAR

- Slide Escutcheon (1) and (2) onto the Shower Bar (5). Escutcheons must be slid all the way onto the bar so that they are not obstructing the holes for SET SCREWS (6).
- Apply o-ring grease to the two o-rings on Adapter (3).
- Push and slide Shower Bar (5) onto Adapter (3) and (4).
- Tighten Set Screws (6) with provided Hex Wrench.
- Slide Escutcheon (1) against the wall.
- Escutcheon (2) is installed with DOUBLE SIDED TAPE (7). Remove the double sided tape backing then slide and press ESCUTCHEON (2) against wall. Press firmly and hold for at least 30 seconds.



3 REPLACE OR INSTALL FILTER

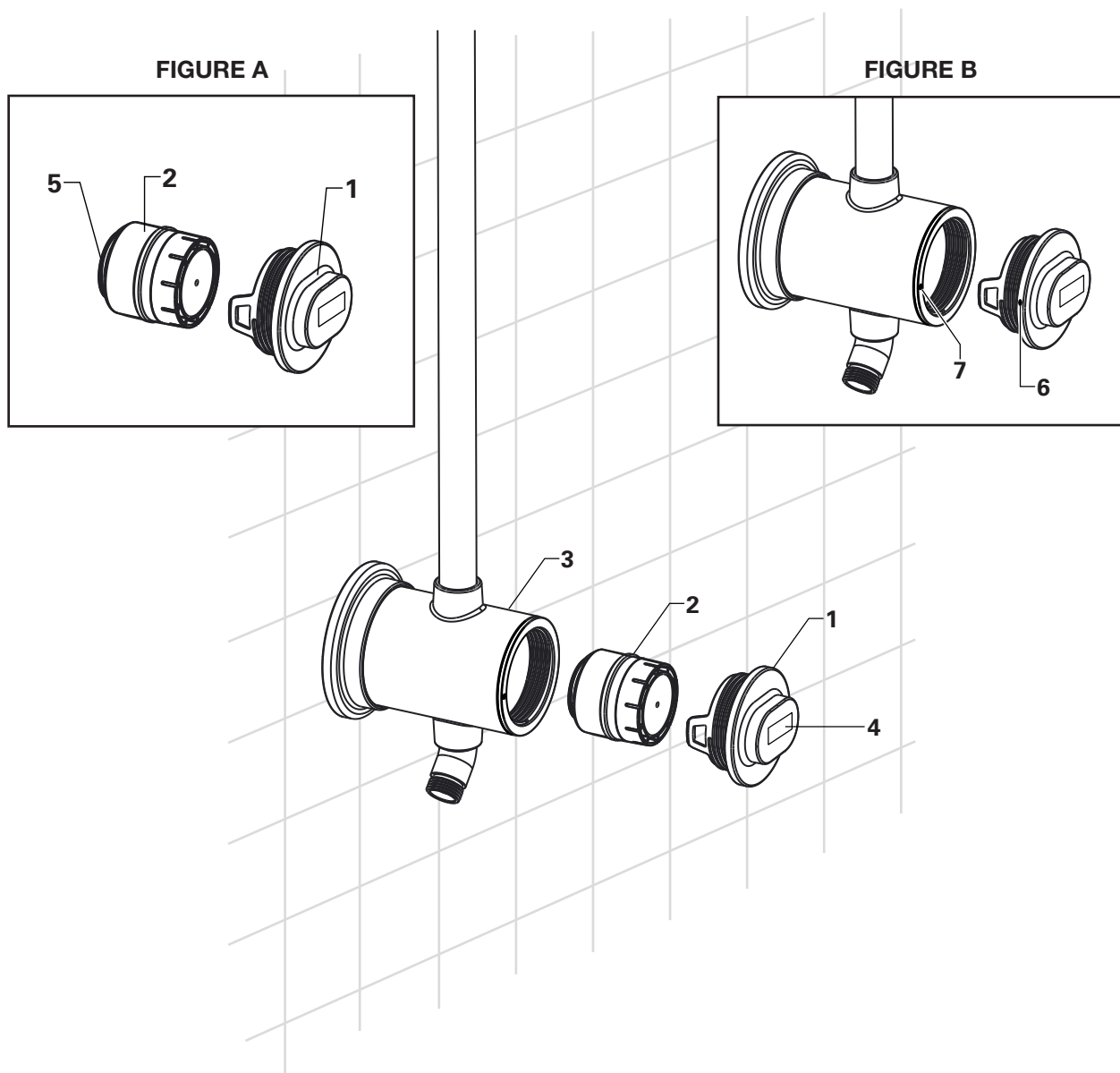
- Remove plastic wrap from FILTER (2). Remove FILTER LABEL (5). Minor particles found outside the filter are normal. Rinse the filter.
- Unthread Filter Cover (1) from Filter Housing (3).
- Replace or install Filter (2). The Filter is a snap fit onto Filter Cover (1) and can be installed by pushing or removed by pulling.

NOTE: Filter orientation must be maintained as in **Figure A**. O-rings on FILTER (2) face away from FILTER COVER (1).

- Thread Filter Cover (1) onto Filter Housing (3). To ensure American Standard Logo (4) is upright after threading, begin threading with the Logo (4) upside down. Alternatively, the CIRCULAR MARKING (6) on the filter cap should be aligned with the matching CIRCULAR MARKING (7) on the filter housing before threading as in **Figure B**.

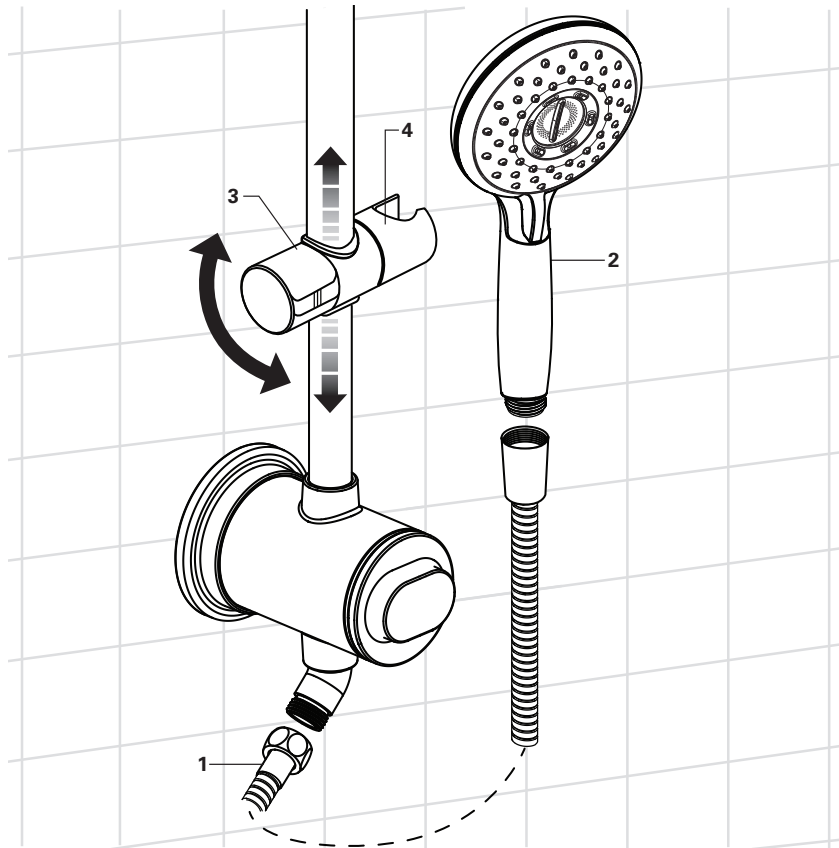
- Allow cold water to run through the new filter to flush the system for 1 minute.

NOTE: Filter life is approximately 4 months. Based on a usage of a household of 4 showering once per day for 6 minutes per shower. Total capacity is 5000 gallons.



4 THREAD HOSE

- Thread Hose (1) onto shower bar.
- Direct shower hose into tub and turn hand shower valve on. Run water for 1 minute to condition filter for optimal performance.
- Thread Hose (1) into Hand Shower (2).
- Use KNOB (3) on HOLDER (4) to adjust hand Shower (2) height on the slide bar.



- Water Filtering System Specifications
 - Rated Service Life of 5000 gallons (18927 L)
 - Pressure: 20 – 125 psi (0.7 – 8.6 bar)
 - Temperature: 50 - 150°F (10 - 66°C)
 - Flow Rate: 1.8 gpm (6.8 L/min)
- The system and installation shall comply with applicable state and local regulations.
- System certified by IAPMO R&T according to NSF/ANSI 177 standard for the reduction of free available chlorine.
- System is not intended to be used as a drinking water treatment unit.
- **Important Notice:** Read the Manufacturer's Performance Data Sheet.
- **NOTE:** Use only FS50 Replacement Cartridge.

PART OF **LIXIL**



HOT LINE FOR HELP

For toll-free information and answers to your questions, call:
1 (800) 442-1902

Mon. - Fri. 8:00 a.m. to 8:00 p.m. EST

Saturday 10:00 a.m. to 4:00 p.m. EST

IN CANADA 1-800-387-0369

(TORONTO 1-905-306-1093)

Weekdays 8:00 a.m. to 7:00 p.m. EST

IN MEXICO 01-800-839-1200

